




LEGEND


TOWN LINE 


LAKE, POND, STREAM 

ADJACENT MAP **2**

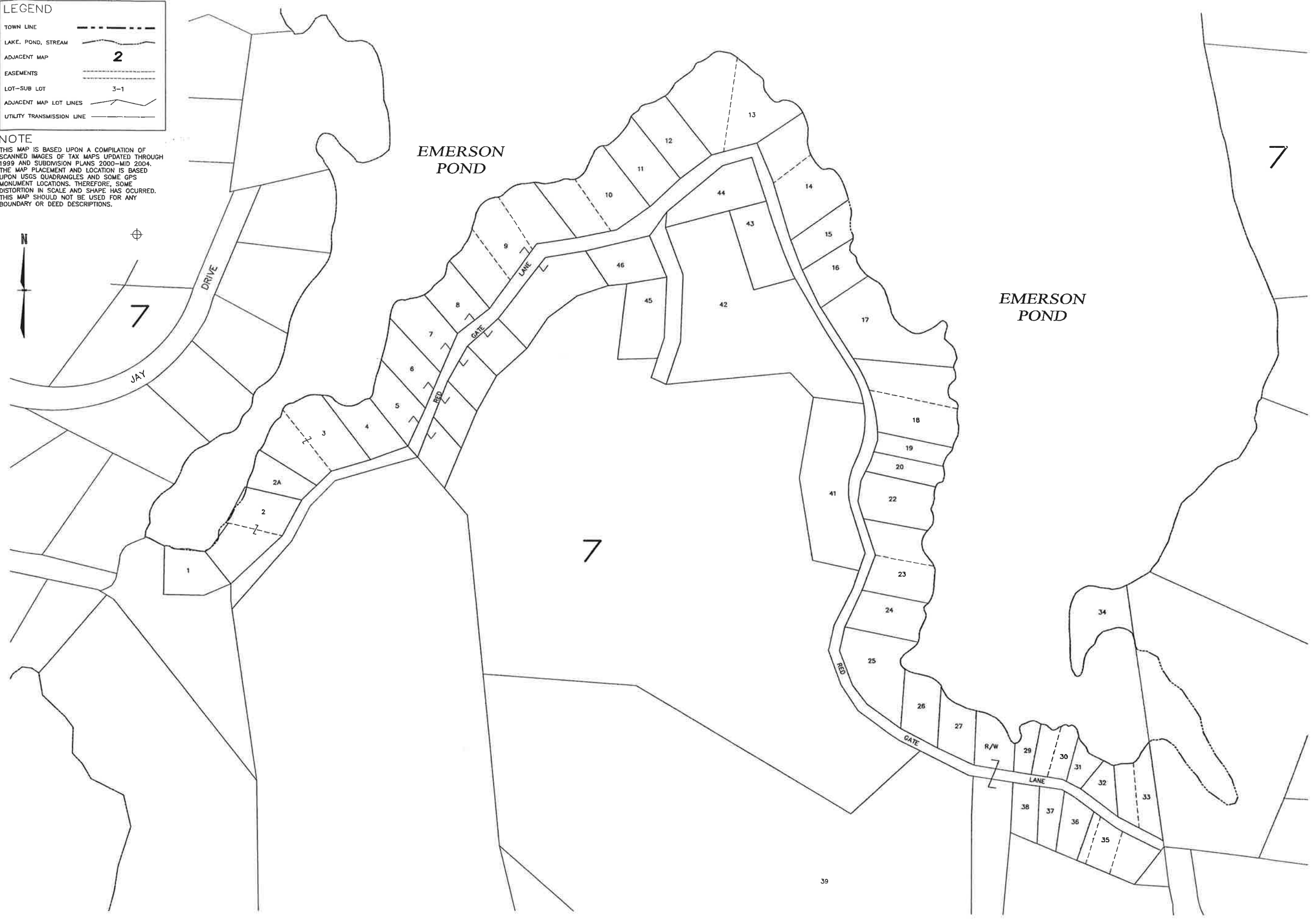
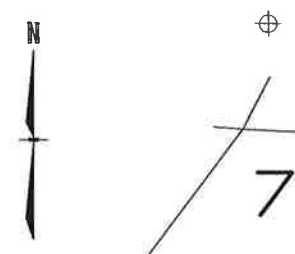
EASEMENTS 

LOT-SUB LOT 3-1

ADJACENT MAP LOT LINES 

UTILITY TRANSMISSION LINE 

NOTE
 THIS MAP IS BASED UPON A COMPILATION OF
 SCANNED IMAGES OF TAX MAPS UPDATED THROUGH
 1999 AND SUBDIVISION PLANS 2000-MID 2004.
 THE MAP PLACEMENT AND LOCATION IS BASED
 UPON USGS QUADRANGLES AND SOME GPS
 MONUMENT LOCATIONS, THEREFORE, SOME
 DISTORTION IN SCALE AND SHAPE HAS OCCURRED.
 THIS MAP SHOULD NOT BE USED FOR ANY
 BOUNDARY OR DEED DESCRIPTIONS.



48 Constitution Drive
 Bedford, NH 03110
 Phone: (603) 882-8888
 Fax: (603) 882-4747
 www.tfm.com

Civil Engineers
 Structural Engineers
 Traffic Engineers
 Land Surveyors
 Land Planners
 Landscape Architects

Bedford, NH • Manchester, NH • Salem, NH • Keene, NH • Portsmouth, NH

TOWN OF RINDGE
CHESHIRE COUNTY
NEW HAMPSHIRE

DATED: August 2004
 REVISED: April 2005
 June 2005
 CURRENT TO:
 APRIL 1, 2017

SCALE: 1"=100'±
 CADFILE: 82290 base

PROPERTY
 MAP
 34